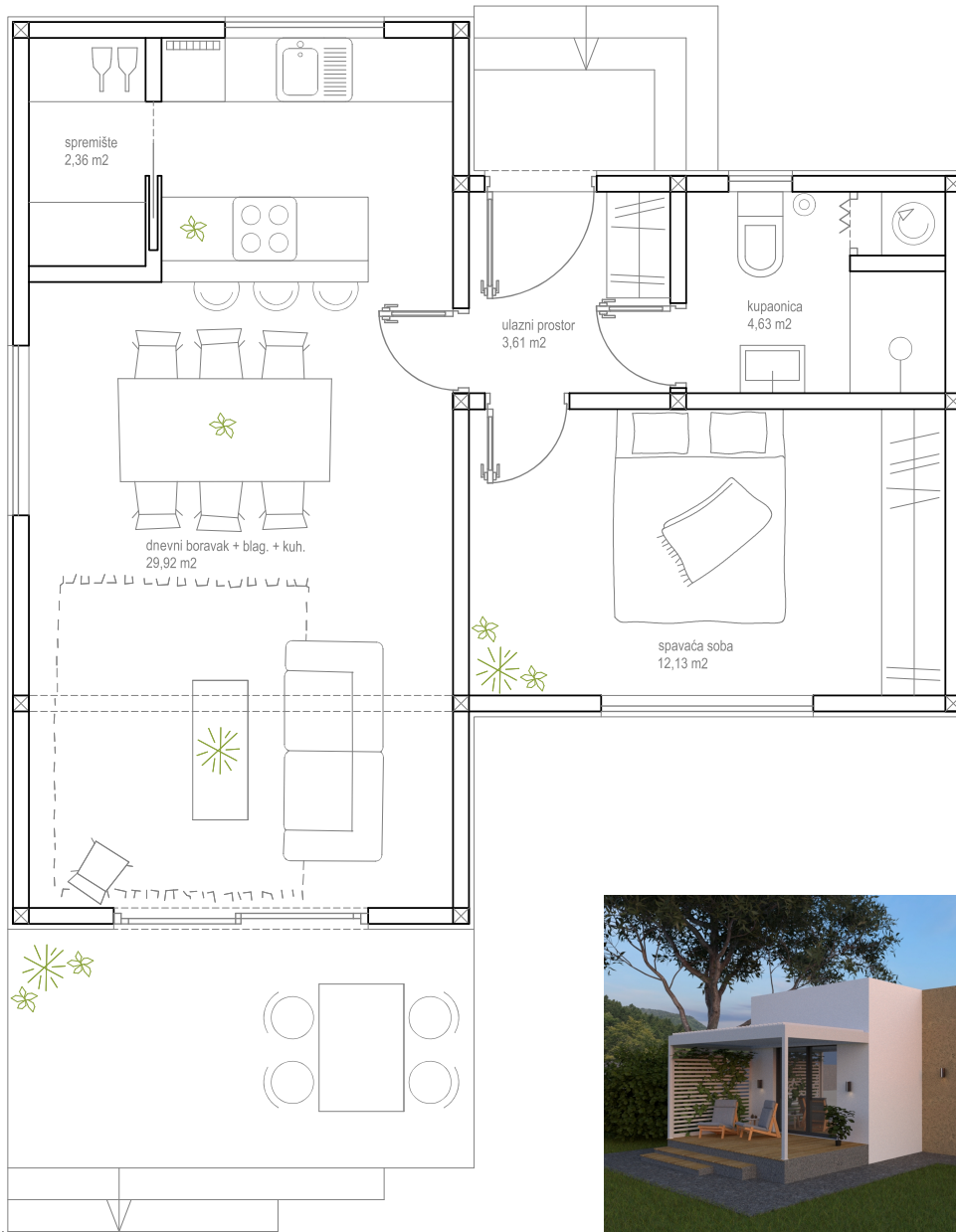
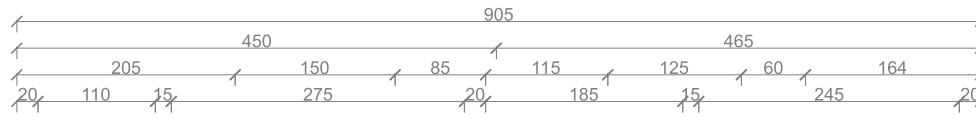


# HOUSE EMA (brutto 63 m<sup>2</sup>)



## SPECIFICATIONS:

- aluminium construction
- anthracite carpentry with blinds
- single-pitched roof covered with trapezoidal sheet metal (anthracite)
- Farmacell boards outside 12mm
- facade EPS 12 cm with finishing plaster 1,5 mm
- thermal insulation mineral wool – 100 mm
- gypsum board – 12,5 mm (duplex knauf panels)
- waterproofing, thermal insulation and EPS – 50 mm, PE foil, cement screed,
- the final covering layer of the floor (laminate, tiles)
- room door
- shower cabin, sanitation
- electricity installations, water, heating
- PERGOLAS is charged extra

**PRICE:** 66.150,00 € + PDV

**DEADLINE OF PRODUCTION:** 60 working days from the confirmation date

